



THE
EVERYMAN

BUSINESS CLUB

BUILDING CREATIVE CONNECTIONS



BUSINESS MEMBERSHIPS

Members of The Everyman Business Club will enjoy a year of inspirational theatre and a host of exclusive benefits including ticket allocation, client/staff engagement, brand visibility and the opportunity to develop bespoke events. Memberships start from €1000 with 3 levels available; **CURTAIN RAISER, APPLAUSE and ENCORE.**

We are also happy to build a bespoke package for your business and budget.

Each level includes the following core benefits:

- VIP booking and waiting list priority for selected shows
- Advance notification of season
- Group booking discounts
- Team nights at The Everyman
- Members updates/newsletter by email
- Invitation to special events
- Invitation to selected dress rehearsals throughout the year
- Discount on venue hire
- Pre-ordered drinks option
- Branding opportunities
- Supporter credit on our supporters wall and website

CURTAIN RAISER €1000

CURTAIN RAISERS enjoy all the core benefits listed along with:

2 complimentary tickets per month*
A private backstage tour for 4 guests

APPLAUSE partners enjoy all the core benefits listed along with:

4 complimentary tickets per month*
A private backstage tour for 6 guests
10% employee discount on tickets*

APPLAUSE €2500

ENCORE €5000

ENCORE partners enjoy all the core benefits listed along with:

6 complimentary tickets per month*
A private backstage tour for 8 guests
Acknowledgment in season brochure
20% employee discount on tickets*

*Tickets for selected shows, if allocation is not used it will roll over into next month

WHAT WE DO

The Everyman is a registered charity and our mission is to provide an exhilarating cultural experience for everyone: audiences, artists and communities. When you partner with us you support this mission along with our other projects and goals; here is a small sample of what else we do.

We are happy to discuss your further support on any of these projects.

Heritage Preservation

The Everyman has been in Cork since 1897. It is a historic piece of our city and a gem of Victorian architecture. As guardians of this building we work to keep it in the best condition possible, preserving our history and heritage.



Getting the Green Light

Lights are one of the most important parts of a production. We are working to replace our lighting rig with energy efficient alternatives to create high impact theatre that's low impact on our environment.



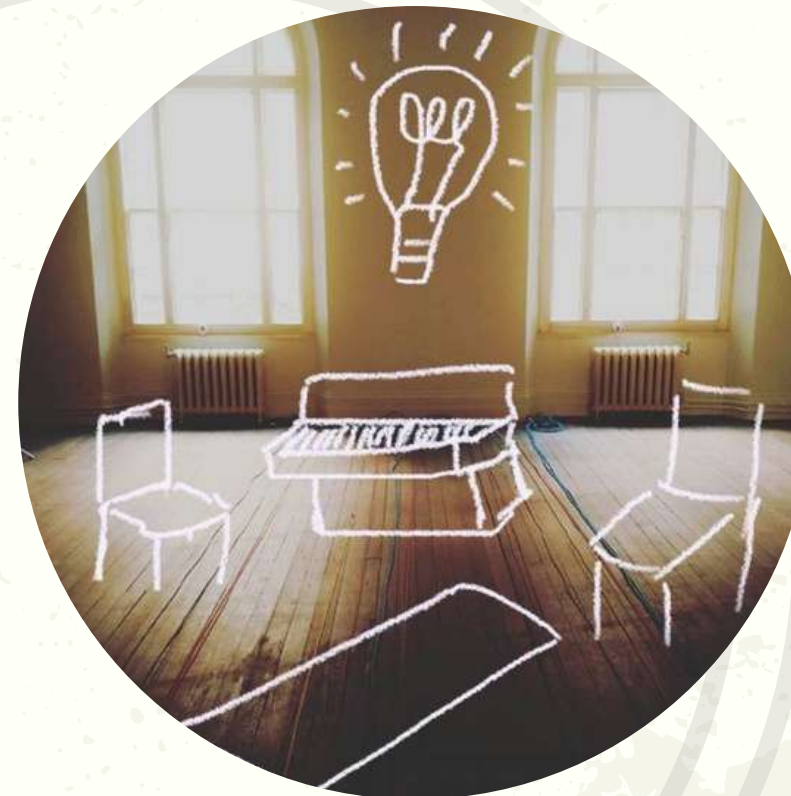
Audience Accessibility

Our audience members are our number one stakeholders. It's important that we can cater to all members of our community and ensure that we make our work accessible to everyone. As part of this, our plans include an accessibility audit of our building, a community ticket fund and exciting programming for all audiences.



The Founders Studio

As Cork's Cultural Home, we want to offer a place for artists to explore, create and develop new work. We've decided to fully commit a space in our building for exactly that. The Founders Studio is a renovation project. We are working to fully equip a room in our theatre as a smaller performance and rehearsal space where artists can make and present new work.



PILLAR PATRONS



We want to ensure Artists and Participants have a valued role in the re-shaping of The Everyman. We have a responsibility to support and nurture artists, particularly local artists. We also wish to begin a relationship with participants from our local communities who have not engaged with The Everyman before.



We want our beautiful theatre to stand as a home, a refuge for all of our communities. We want our building to be a beacon for artists and audiences, a place to be proud of. We want our building to extend beyond the walls of MacCurtain Street into our local community.



Our artistic programme and our audiences are intrinsically linked. Without high-quality programming and presentation of excellent performances, we will not maintain our audiences. At the heart of all of our discussions about what we choose to produce or present, are our audiences.



We want to create pathways into the organisation for every citizen of our city. We want to develop relationships with those who do not currently engage with The Everyman, and develop a pathway into the organisation for them.

Becoming a Pillar Patron means you can choose to support a specific project linked to one of our strategic pillars. We can build a bespoke partnership with you for your business to align with your company's values.

TO FIND OUT MORE ABOUT PARTNERSHIPS WITH THE EVERYMAN

CONTACT

ANNA MARIE COUGHLAN

DEVELOPMENT & PARTNERSHIPS MANAGER

021 455 7822 | 087 145 9242

friends@everymancork.com

OR VISIT

WWW.EVERYMANCORK.COM/SUPPORTUS

The Everyman is a not-for-profit theatre with charitable status Registered Charity Number 20150952. Registered in Ireland.

Company Number 128544